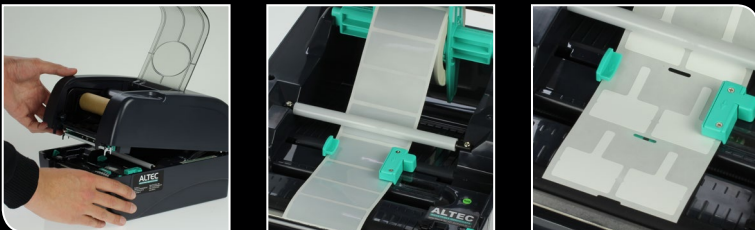


TTP SERIES



Installation guide



1. Checklist

Unpack the printer and check if the following materials are present:

- TTP-printer
- Cardboard roll (waste roll)
- Black plastic ink ribbon spindle (2X)
- Green plastic label spindle (1X)
- Green center wings (2X)
- USB-cable
- Power cable
- 24V AC power supply

2. Connections

Remove all packaging and connect the adapter to the printer.
Connect the power cable and now connect the printer to the computer or network.

Note: Install the printer driver before switching on the printer.



1. Ethernet (optional)
2. USB
3. Parallel
4. Serial
5. Power supply
6. On/Off switch

3. Install ink ribbon



A. Open the transparent cover by pressing it down.



B. Insert the first ink ribbon spindle (black) in the ink ribbon roll. Make sure the ink ribbon unwinds at the backside and the rim of the label spindle is on the right side (see image).



C. Install the black spindle including the ink ribbon on the rear axle. First place it left and while pushing the spring, place it right.

Note: The rim of the label spindle should be on the right.



D. Insert the the other black spindle into the cardboard waste roll.



E. Install the black spindle including the waste roll on the front axle. Also here, first place it left and while pushing the spring, place it right.



F. Open the top of the printer using the green latches on both sides of the printer and lift it up. It will lock in an open position.



G. Move the begin of the ink ribbon below the printhead and attach it to the waste roll.



H. Rotate the ink ribbon until the black part reaches the waste roll.

4. Install labels



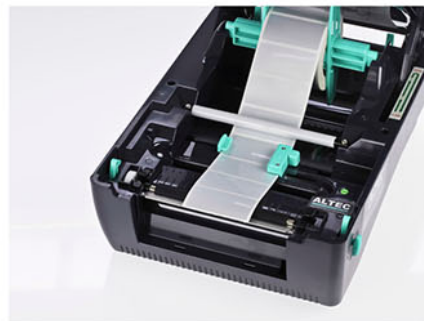
I. Place your roll of labels on the green label spindle and center it with the green wings.



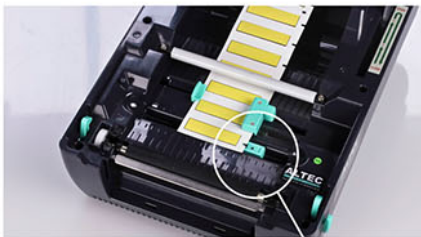
J. Place the label spindle with the labels in the notches at the back of the TTP printer.



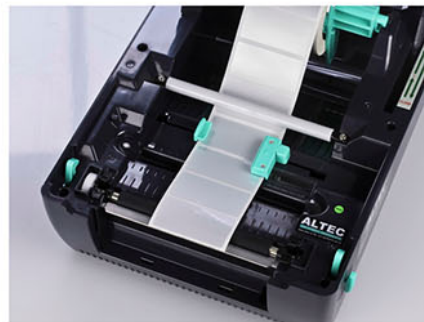
K. Move the labels below the white bar and center the green guides with both hands to the sides of the label roll. The right guide is the gap sensor.



L. Make sure there is no movement between the labels and the guides. Also make sure the guides are not too tight.



M. If the label roll has a notch or detection hole, the black mark sensor must be used (the green guide at the bottom of the printer). Make sure the sensor eyes (black rectangle) are positioned directly below the notch. The black mark sensor can be moved from left to right.



N. Feed the labels until they reach the metal edge at the front of the printer. Now close the printer by lifting it out of its lock and pushing it down gently until it clicks.



O. Close the transparent cover.